

# Harry Potter

## Word Scramble

WHO MADE THIS?

Created by Kim White Steele for Puzzles to Print.

CONTACT

[admin@puzzles-to-print.com](mailto:admin@puzzles-to-print.com)

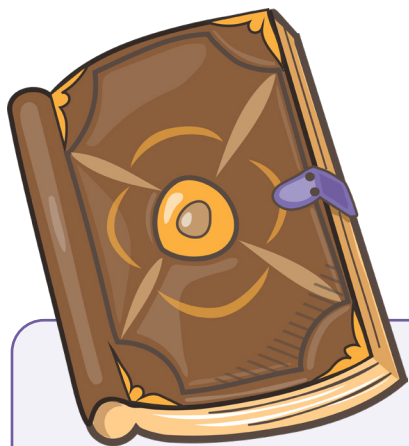
ILLUSTRATIONS

All images used under license from Dreamstime.com.

COPYRIGHT

© 2019 Kim White Steele - All rights reserved.  
Permission to copy for single classroom use only.  
Not for public display.

Name: \_\_\_\_\_ Date: \_\_\_\_\_



# Harry Potter

## Word Scramble

Somebody has cast a Gobbledygook Spell on Harry and his words are coming out all mixed up. Can you figure out what he is saying? Watch out! Some of the words are actually two.

DIGHAR

\_\_\_\_\_

MUEGGL

\_\_\_\_\_

DANW

\_\_\_\_\_

DLTEOVROM

\_\_\_\_\_

RDFFGRYONI

\_\_\_\_\_

LRUESYDS

\_\_\_\_\_

OEBDLDMREU

\_\_\_\_\_

ANEYWREOLS

\_\_\_\_\_

RRSKAATD

\_\_\_\_\_

LILEBEONR

\_\_\_\_\_

IQCDIDUTH

\_\_\_\_\_

TRWFCICTHA

\_\_\_\_\_

NPOTSI

\_\_\_\_\_

ENOEHIRM

\_\_\_\_\_

LAEAYNIOLGD

\_\_\_\_\_

AAOCMYRDFLO

\_\_\_\_\_

NLIGWOR

\_\_\_\_\_

ILIVSNBEI

\_\_\_\_\_

DRNOGA

\_\_\_\_\_

OCSOHL

\_\_\_\_\_

ARHRY

\_\_\_\_\_

CASR

\_\_\_\_\_

IWZRDA

\_\_\_\_\_

RWSGAOTH

\_\_\_\_\_

# Harry Potter

## Word Scramble

### SOLUTION

DIGHAR	<u>HAGRID</u>
MUEGGL	<u>MUGGLE</u>
DANW	<u>WAND</u>
DLTEOVROM	<u>VOLDEMORT</u>
RDFFGRYONI	<u>GRYFFINDOR</u>
LRUESYDS	<u>DURSLEYS</u>
OEBDLDMREU	<u>DUMBLEDORE</u>
ANEYWREOLS	<u>RON WEASLEY</u>
RRSKAATD	<u>DARK ARTS</u>
LILEBEONR	<u>REBELLION</u>
IQCDIDUTH	<u>QUIDDITCH</u>
TRWFCICTHA	<u>WITCHCRAFT</u>

NPOTSI	<u>POINTS</u>
ENOEHIRM	<u>HERMIONE</u>
LAEAYNIOLGD	<u>DIAGON ALLEY</u>
AAOCMYRDFLO	<u>DRACO MALFOY</u>
NLIGWOR	<u>ROWLING</u>
ILIVSNBEI	<u>INVISIBLE</u>
DRNOGA	<u>DRAGON</u>
OCSOHL	<u>SCHOOL</u>
ARHRY	<u>HARRY</u>
CASR	<u>SCAR</u>
IWZRDA	<u>WIZARD</u>
RWSGAOTH	<u>HOGWARTS</u>